



National Rugby League Limited  
Fox Studios Development  
Lang Road, Moore Park NSW 1363  
Postal Address:  
GPO Box 3498 Sydney NSW 2001  
ABN 23 082 088 962  
Internet: www.nrl.com  
Telephone: (02) 9339 8500  
Facsimile: (02) 9339 8508

## Memorandum

To:	ARLRA Referees' Coaches
From:	Michael Stone
Date:	2 June 2005
Subject:	MS 0010/05

### **NEWS FROM NRL**

Robert Finch was none too happy at the level of penalties awarded in round 12. No, it wasn't because he simply thought that there were too many, it was because they weren't EFFECTIVE.

The NRL squad were reminded that penalties are essentially of two types – Mandatory and Discretionary. The Mandatory penalty is the kick off out on the full, offside play, foul play variety. These penalties are awarded as punishment and a deterrent to future poor behaviour.

The discretionary or education penalty is the technical breach. Examples include the 10 metre penalty, holding down, markers not square, and failure to retire penalties. Whereas the mandatory penalty is one where we would a penalty for each and every breach, the discretionary penalty is one where the referee may apply advantage or may award the penalty. The discretionary penalty is also meant to EDUCATE the player(s) into playing to the Laws.

As with other Laws in our society, they are only as good as the big stick held over them. In one match at the weekend, both teams were content to commit technical breaches all day. The referee was content to penalise them but alas, not proceed to the next level of punishment. The referees were reminded that other strategies need to be implemented in order to get a game of football.

As a result, I think that you will find that NRL referees will be more inclined to a policy of early intervention rather than waiting until the latter part of the game to offer a "sin bin" warning. Watch for situations where a number of penalties, especially those of the discretionary type, are conceded in a short space of time. Anticipate that the referee will have a "fire side chat" with the offending captain and suggest that he, as captain, fix the problem for his team. If it

continues, watch for the referee to suggest to the captain that if it continues further, someone will be sitting down. Next step – sin bin.

This extra step accentuates the EFFECTIVENESS of the penalty. Like the boy who cried “Wolf”, if referees merely threaten and never take the next step, players won’t believe him and therefore his penalties, and by corollary, himself, become ineffective. An ineffective referee is one looking for another job.

## **WHERE DO I GIVE THE PENALTY?**

Richard Johnston has offered the following in respect to awarding the penalty in the right spot.

*“How often in games, at all levels, do we see a referee rightly so award a penalty for an infringement but alas see it awarded at the wrong spot. It is one thing to award the penalty but it is paramount that it is given in the correct spot or the outcome of a game can be influenced. With this in mind the following examples are given to clarify misconceptions.*

*Red attempts a drop goal which is unsuccessful and is late tackled on the Blue 20 metre line.*

*The Law Section 13,10. Penalty to Red in front of the goal posts.*

*Red attempts a drop goal which is unsuccessful and the ball goes over the Blue dead ball line. Another onside Red player is obstructed on the Blue 30 metre line.*

*The Law Section 13, 1(a) Penalty to Red 10 metres out from where the ball crossed the Blue goal line.*

*Red punt kicks a ball which hits the Blue upright and is caught on the full by a Blue player on the Blue 20 metre line. The Red kicker is later tackled by Blue.*

*The Law Section 13, 1(a) Penalty to Red where the ball is caught by Blue on the Blue 20 metre line.*

*Red grubber kicks a ball which rebounds off a Blue player, standing 5 metres out from the Blue goal line. The ball is regathered by another Blue player standing on the Blue 20 metre line.*

*The Law Section 13, 1(a) Penalty to Red against the offside Blue player at the 20 metre line.*

*Red kicks in general play to Blue. An offside Red player who is inside the 10 metres moves in to tackle Blue who knocks on.*

*The Law Section 13 1(a) Section 14, 2. Penalty to Blue where the tackled is effected.*

*Red grubber kicks into the Blue in goal. The Blue fullback picks up the ball and passes the ball forward to another Blue player also in-goal but in front of the Blue fullback.*

*The Law Section 13, 1(a) Section 14, 1. Penalty to Red 10 metres out from the Blue goal line in line with the Blue fullback who threw the ball forward.*

*Red knocks on at the halfway line. The ball is regathered by Blue on the Blue 30 metres line. The Blue player is immediately tackled by an offside Red player.*

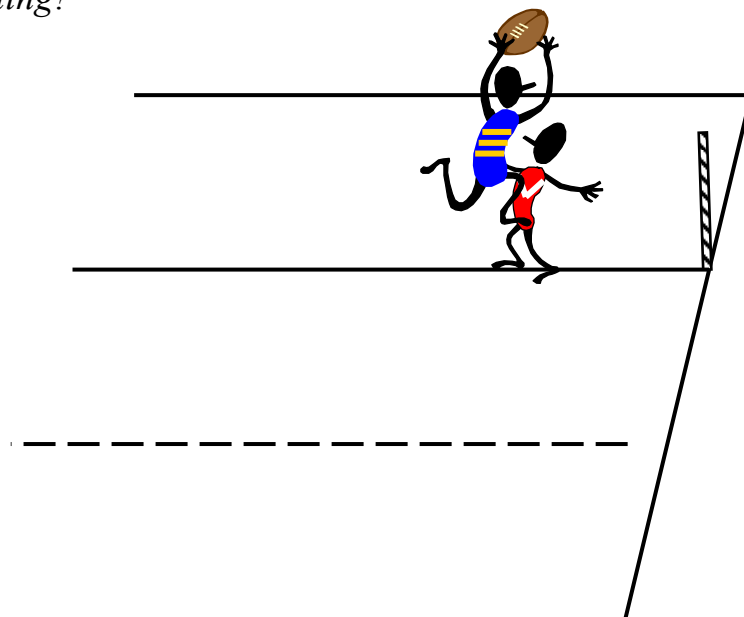
*The Law Section 13, 1(a) Penalty to Blue where the Red offside player tackled Blue.*

*I am sure readers can come up with more. If so forward the incidents on to me for inclusion in the next memo.”*

### **RULING OF THE WEEK**

The blue team attacking the red goal line kicks the ball after the fifth play the ball. A blue player who is attempting to catch the ball is tackled mid air by a red player standing in the in-goal. The blue player loses the ball which goes dead in-goal.

*What is your ruling?*



## **The Laws**

### *Section 11. 1(b) Mid Air Tackle*

*It is illegal to tackle an opposing player attempting to field a kick whilst the player is in mid-air. The catcher must have returned to the ground before being tackled. (See section 15.). Applies only when a player on the non-kicking team catches a ball on the full.*

## **FREE KICK “GENERAL PLAY”?**

Col White writes:-

*“Can you please confirm or advise otherwise...”that after a free kick is taken it becomes 'general play'”. This has always been my understanding but it is not specifically stated in rule book, only by suggestion.”*

As usual, you are correct Col.

## **DRILLS FOR MINI MOD**

Prominent Level 2 coach Brian Waiting has devised a number of very good looking drills for mini mod. We are hoping to enhance them with diagrams over the next couple of weeks and include them in a memo soon. Congratulations Brian. Along with Group 3 referees, and Penrith who have devised a good Laws quiz, it is great to see our coaches showing initiative. I don't agree with one of your answers though Brett. Nonetheless, don't take your eye off the ball.

MICHAEL STONE

ARLRA PARTICIPATION COMMITTEE CONSULTANT

NRL REFEREES' CO-ORDINATOR